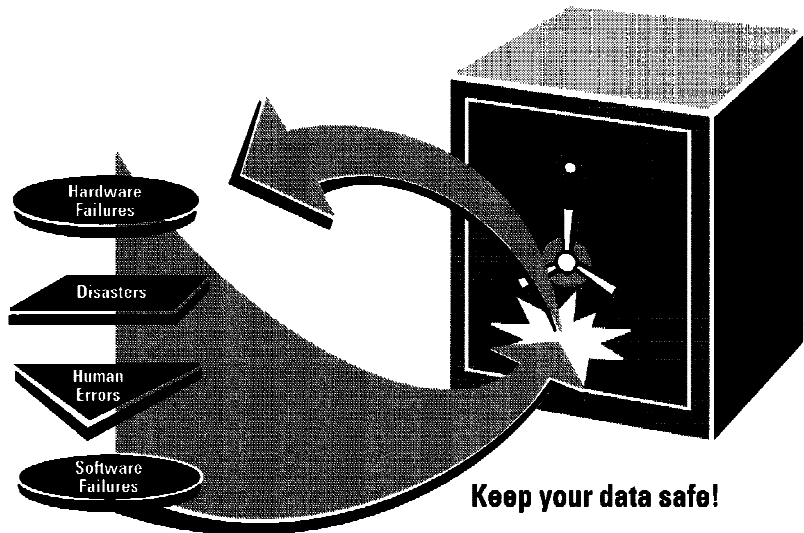

HP OpenView OmniBack

Technical Data

For Backup and Recover the Choice Is Simple – HP OpenView OmniBack

The increasing number of distributed, networked computing environments, has brought the importance of central backup and recovery into clear view. As data is spread across a heterogeneous network, the availability and protection of data becomes critical. Data can be easily lost, system uptime is decreasing, and operating costs are on the rise in this type of networked environment. HP realized the need for a central backup and recovery system that would address these kinds of problems, both in the network and standalone environments. So, with a clear view of the future, HP created the HP OpenView OmniBack family. The family consists of HP OmniBack, HP OmniBack/Turbo, and HP OmniBack/Link; the choice for better backup and recovery.



What Can HP OmniBack Do for You?

- Perform centrally controlled network backup;
- provide a user-friendly interface;
- allow unattended operation;
- supply sophisticated scheduling and journaling;
- support heterogeneous environments;
- reduce backup and recovery time;
- decrease operating costs; and
- deliver a system based on industry standards.

What Can HP OmniBack/Turbo Do for You?

Provide all the functionality of HP OmniBack plus

- skyrocket backup performance to up to 20 GB/hour;
- increase server uptime;
- deliver raw disk support; and
- allow online backup of databases (e.g. ORACLE).

What Can HP OmniBack/Link Do for You?

Integrate HP OmniBack into the HP OpenView management stations.

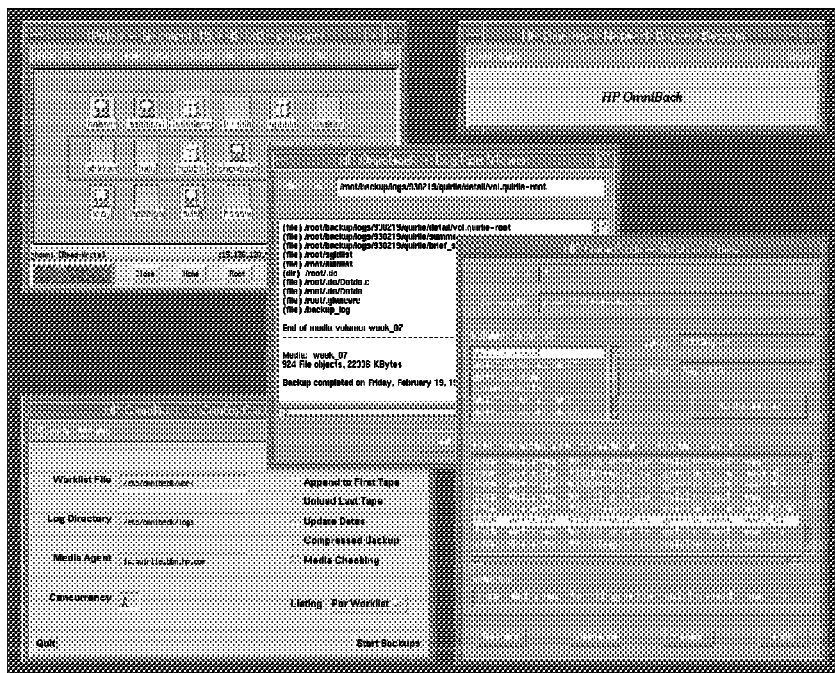
Taking Care of Business Means Taking Care of Backup – HP OmniBack and HP OmniBack/Turbo Make It Easy

- Central backup and recovery, for both systems and workstations on a LAN, is the power of HP OmniBack and HP OmniBack/Turbo.
- HP OmniBack heightens media management. Overwrite protection, log file analysis, media labeling, and the ability to recycle backup media are all part of the media management package.
- To answer the need for improved usability, HP OmniBack provides a common OSF/Motif-based graphical user interface for both backup and restore.

- Increased media capacity is achieved through HP OmniBack's data compression facility. This feature increases your backup performance while, at the same time, reduces the network traffic.
- HP OmniBack/Turbo offers all the functionality of OmniBack with the addition of a high-speed component for local data backups. Up to 20 GB/hour is attainable depending on the backup device configuration.

Bringing It All Together

The OpenView integration component, HP OmniBack/Link, allows HP OmniBack to send error notifications directly to the HP OpenView management station. This enables central management of multiple HP OmniBack servers by, for example, the HP OpenView Network Node Manager or HP OpenView OperationsCenter.



Reduced Operating Costs

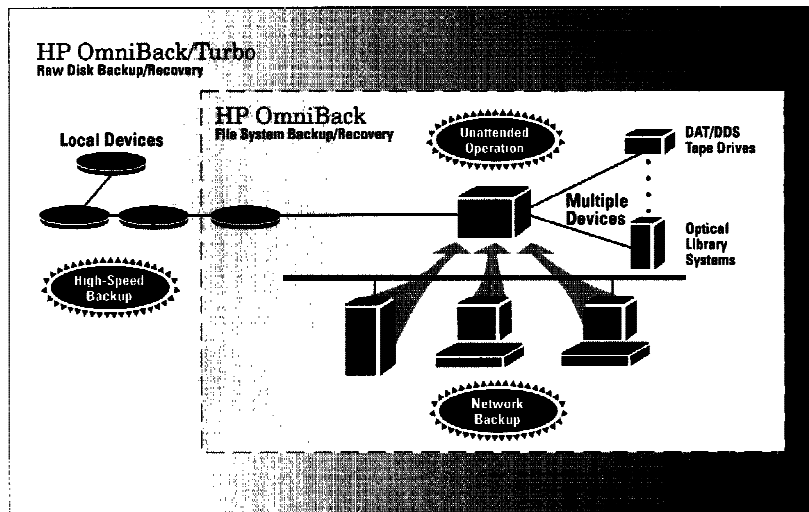
- The HP OmniBack data compression facility saves you money. It reduces media costs by increasing media capacity.
- Centralized control of network-wide backup for mixed environments lowers operating and resource costs dramatically by reducing time spent on backup and recovery.
- Unattended backup through support of DAT and optical library systems eliminates operator intervention, thereby reducing costs.
- HP OmniBack and HP OmniBack/Turbo have sophisticated journaling and scheduling capabilities. This automatically relieves the operator of the time-consuming tasks of tracking, logging, and rescheduling network and system backups.
- HP OmniBack/Turbo's high speed component greatly decreases system downtime, which translates into higher productivity.
- HP OmniBack is based on HP's Network Computing System (NCS), an industry standard. This protects your investment by allowing you to combine different machines together in a heterogeneous network.

High Performance

- High speed backup is a major requirement for systems with large amounts of online data. This is especially true for large databases. High speed backup provides a tremendous increase in system availability.
- HP OmniBack/Turbo's high speed component reaches a record high 20 GB/hour raw disk backup performance on local data, depending on the backup device configuration. Full restore capability functions here at its best.
- Simultaneous backup of multiple systems over the network is just one more reason to choose HP OmniBack. The impressive, fast search capabilities of HP OmniBack allow you to recover single files in just a matter of minutes.

Database Backups

- Offline database backup of file-system based databases is easily performed with HP OmniBack and HP OmniBack/Turbo. In addition, HP OmniBack/Turbo allows backup of databases based on raw disk.
- Online database backup can be handled by HP OmniBack/Turbo when using certain database products (for example, ORACLE).



Support of Heterogeneous Environments

- Rapid growth in computer networks means the virtual disappearance of homogeneous environments. Therefore, a software solution which supports multiple platforms is a necessity. Both HP OmniBack and HP OmniBack/Turbo enable total network backup management in mixed environments of
 - HP-UX
 - Apollo Domain
 - SunOS (backup clients only)
- In addition, it is viable to backup and recover files from/to disks that are mounted on supported platforms as NFS file systems.
- MS-DOS® PC integration into the HP OmniBack environment is attainable through interoperation of HP OmniBack with Plan-B/UX from Quest. Of course, PC data stored on the HP-UX server via LAN Manager/X or the Netware 9000, can also be backed up and recovered.

When to Choose HP OmniBack and When to Choose HP OmniBack/Turbo

- HP OmniBack is a file system backup/recovery solution for standalone or networked systems. Through the support of DAT/DDS devices and HP's Rewritable Optical Disk Library Systems, it is well suited for unattended network backup.

- If you need fast, full backup, then HP OmniBack/Turbo is the right choice for you. HP OmniBack/Turbo compliments its inherent HP OmniBack features with high speed backup of local data via raw disk support.

HP OmniBack/Link

HP OmniBack/Link easily integrates HP OmniBack into the HP OpenView Network Node Manager or HP OpenView OperationsCenter:

- The operator or administrator can now work in a uniform user environment, accessing HP OmniBack through the HP OpenView management station.
- Problems and errors are automatically reported to the OpenView management station. The operator or administrator is notified via a color change of the respective HP OmniBack symbol on the OpenView map.
- Direct access to the OmniBack application is provided through graphical application symbols and menu tasks on the OpenView map.

HP OpenView OmniBack Is Suitable for the Following Environments

- stand-alone systems
- networked systems (LAN)

HP OmniBack Supports the Following Platforms

- HP 9000 Series 300; HP-UX 8.0x or 9.0
- HP Apollo 9000 Series 400/700; HP-UX 8.0x or 9.0
- HP 9000 Series 800; HP-UX 8.0x or 9.0
- HP Apollo Domain workstations; SR 10.3.5 or 10.4
- Sun SPARCstations (backup clients only); SunOS 4.1.1 and 4.1.2

HP OmniBack/Turbo and HP OmniBack/Link Is Available for the Following Platforms

- HP Apollo 9000 Series 700; HP-UX 8.0x or 9.0
- HP 9000 Series 800; HP-UX 8.0x or 9.0

Supported Backup Devices for HP OmniBack and HP OmniBack/Turbo under HP-UX Are

- DAT/DDS tape drives
- rewritable optical disk library systems
- stand-alone rewritable optical disk drives
- 1/2 inch tape drives (local high speed backup of HP OmniBack/Turbo only for HP 7980A and 7980XC tape drives)
- all disks supported under HP-UX (HP OmniBack and HP OmniBack/Turbo's network component only)

Supported Backup Devices for HP OmniBack under Apollo Domain Are

- DAT/DDS tape drives
- Exabyte (8mm) drives
- rewritable optical disk Library systems (HP 9000 Series 400 only)
- 1/2 inch tape drives
- all disks supported under Apollo Domain

Native Language Support

- U.S. English
- Japanese (Kanji; documentation only)

Specific Requirements for HP OmniBack/Link

- HP OmniBack or HP OmniBack/Turbo A.03.00 or later (management station on HP-UX only)
- One of the HP OpenView management software products:
 - HP OpenView Network Node Manager 3.1 or later
 - HP OpenView OperationsCenter 1.0 or later
 - HP OpenView SNMP Platform 3.1 or later
 - HP OpenView DM Platform 3.1 or later

Prerequisites for HP OmniBack and HP OmniBack/Turbo (Network Component)

- ARPA Services
- LAN Link/9000

Ordering Instructions for HP OpenView OmniBack

		Media & Documentation							
		HP-UX	S 300/400	HP-UX	S 700	HP-UX	S 800	Domain/OS	SunOS
License-to-Use		8.0x	9.0	8.0x	9.0	8.0x	9.0	10.3.5/ 10.4	4.1.1/ 4.1.2
HP OmniBack	B1922A	B1944A	B1944B	B1945A	B1945B	B1949A	B1949B	B1947A	B1948A
HP OmniBack/Turbo	B1923A	-	-	B1929A	B1929B	B1950A	B1950B	-	-
HP OmniBack/Link	B1926AA	-	-	B1927AA	B1927AA	B1927AA	B1927AA	-	-

MS-DOS® is a U.S. registered trademark of Microsoft Corporation.

OSF/Motif is a trademark of the Open Software Foundation in the U.S. and other countries.

Technical information in this document is subject to change without notice.

© Copyright 1993
 Hewlett-Packard GmbH
 Printed in the U.S.A. 0393
 5091-7062E